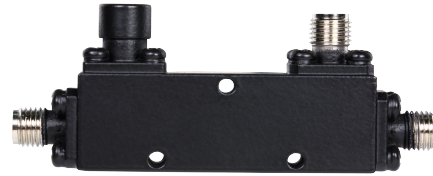


**Features:**

- It can realize the customized design scheme
- High directivity within operational band
- Low loss and High isolation

**Typical Applications**

- Mobile communication field
- GSM,LTE,5G
- Satellite radar, electronic countermeasures
- Test equipment


**Electrical&Mechanical Specifications**

Parameter	Min.	Typ.	Max.	Units
Frequency Range	18		40	GHz
Nominal Coupling	9	10	11	dB
Frequency Sensitivity		±0.7	±1.0	dB
Directivity	12	15		dB
Insertion Loss (Excl. Coupling)			1.1	dB
Insertion Loss (true)		1.4	1.6	dB
VSWR Primary		1.4	1.6	: 1
VSWR Secondary		1.4	1.6	: 1
Power Rating	Average	30		W
	Peak	500 (10%DutyCycle,1usPulseWidth)		W
Impedance	50			Ohms
Weight	NA			ounces
Input / Output Connectors	2.92mm– Female			
Material	Aluminum			
Finish	Oxidation sandblasting			

Environmental Specifications	
Operational Temperature	-40°C~+85°C
Storage Temperature	-50°C~+105°C
Altitude	30,000 ft. (Epoxy Sealed Controlled environment)
	60,000 ft. 1.0psi min (Hermetically Sealed Un-controlled environment)
Vibration	25gRMS (15 degrees 2KHz) endurance, 1 hour per axis
Humidity	100% RH at 35°C, 95%RH at 40°C
Shock	20G for 11msec half sine wave,3 axis both directions

**Outline Drawing:**

All Dimensions in mm (inches)

Outline Tolerances ±0.5(0.02)

Mounting Holes Tolerances ±0.2(0.008)

