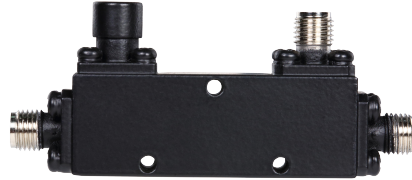


Features:

- It can realize the customized design scheme
- High directivity within operational band
- Low loss and High isolation

Typical Applications

- Mobile communication field
- GSM,LTE,5G
- Satellite radar, electronic countermeasures
- Test equipment


Electrical&Mechanical Specifications

Parameter		Min.	Typ.	Max.	Units
Frequency Range		1		67	GHz
Nominal Coupling		8	10	12	dB
Frequency Sensitivity			±1.0	±1.5	dB
Directivity		8	12		dB
Insertion Loss (Excl. Coupling)			1.5	3.5	dB
Insertion Loss (true)			3.5	4.0	dB
VSWR Primary			1.6	1.7	: 1
VSWR Secondary			1.6	1.7	: 1
Power Rating	Average	20			W
	Peak	200 (10%DutyCycle,1usPulseWidth)			W
Impedance		50			Ohms
Weight		NA			ounces
Input / Output Connectors		1.85mm– Female			
Material		Aluminum			
Finish		Oxidation sandblasting			

Environmental Specifications	
Operational Temperature	-40°C~+85°C
Storage Temperature	-50°C~+105°C
Altitude	30,000 ft. (Epoxy Sealed Controlled environment)
	60,000 ft. 1.0psi min (Hermetically Sealed Un-controlled environment)
Vibration	25gRMS (15 degrees 2KHz) endurance, 1 hour per axis
Humidity	100% RH at 35°C, 95%RH at 40°C
Shock	20G for 11msec half sine wave, 3 axis both directions

Outline Drawing:

All Dimensions in mm (inches)

Outline Tolerances ±0.5(0.02)

Mounting Holes Tolerances ±0.2(0.008)

