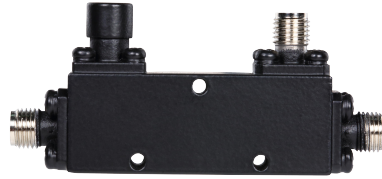


Features:

- It can realize the customized design scheme
- High directivity within operational band
- Low loss and High isolation

Typical Applications

- Mobile communication field
- GSM,LTE,5G
- Satellite radar, electronic countermeasures
- Test equipment


Electrical&Mechanical Specifications

Parameter		Min.	Typ.	Max.	Units
Frequency Range		2		18	GHz
Nominal Coupling		9	10	11	dB
Frequency Sensitivity			±0.5	±0.7	dB
Directivity		12	14		dB
Insertion Loss (Excl. Coupling)			0.5	0.7	dB
Insertion Loss (true)			0.9	1.1	dB
VSWR Primary			1.4	1.5	: 1
VSWR Secondary			1.4	1.5	: 1
Power Rating	Average	50			W
	Peak	1000 (1%DutyCycle,1usPulseWidth)			W
Impedance		50			Ohms
Weight		NA			ounces
Input / Output Connectors		SMA- Female			
Material		Aluminum			
Finish		Oxidation sandblasting			

Environmental Specifications	
Operational Temperature	-40°C~+85°C
Storage Temperature	-50°C~+105°C
Altitude	30,000 ft. (Epoxy Sealed Controlled environment)
	60,000 ft. 1.0psi min (Hermetically Sealed Un-controlled environment)
Vibration	25gRMS (15 degrees 2KHz) endurance, 1 hour per axis
Humidity	100% RH at 35°C, 95%RH at 40°C
Shock	20G for 11msec half sine wave,3 axis both directions

Outline Drawing:

All Dimensions in mm (inches)

Outline Tolerances ±0.5(0.02)

Mounting Holes Tolerances ±0.2(0.008)

