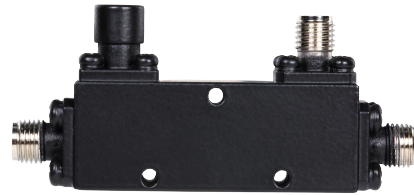


Features:

- It can realize the customized design scheme
- High directivity within operational band
- Low loss and High isolation

Typical Applications

- Mobile communication field
- GSM,LTE,5G
- Satellite radar, electronic countermeasures
- Test equipment



Electrical&Mechanical Specifications					
Parameter	Min.	Typ.	Max.	Units	
Frequency Range	2		50	GHz	
Nominal Coupling	9	10	11.5	dB	
Frequency Sensitivity		± 1.0	± 1.8	dB	
Directivity	10	12		dB	
Insertion Loss (Excl. Coupling)			2.0	dB	
Insertion Loss (true)		2.0	2.3	dB	
VSWR Primary		1.7	1.9	: 1	
VSWR Secondary		1.7	1.9	: 1	
Power Rating	Average	50			W
	Peak	500 (10%DutyCycle,1usPulseWidth)			W
Impedance	50			Ohms	
Weight	NA			ounces	
Input / Output Connectors	2.4mm– Female				
Material	Aluminum				
Finish	Oxidation sandblasting				

Environmental Specifications	
Operational Temperature	-40°C~+85°C
Storage Temperature	-50°C~+105°C
Altitude	30,000 ft. (Epoxy Sealed Controlled environment)
	60,000 ft. 1.0psi min (Hermetically Sealed Un-controlled environment)
Vibration	25gRMS (15 degrees 2KHz) endurance, 1 hour per axis
Humidity	100% RH at 35°C, 95%RH at 40°C
Shock	20G for 11msec half sine wave, 3 axis both directions

Outline Drawing:

All Dimensions in mm (inches)

Outline Tolerances ±0.5(0.02)

Mounting Holes Tolerances ±0.2(0.008)

