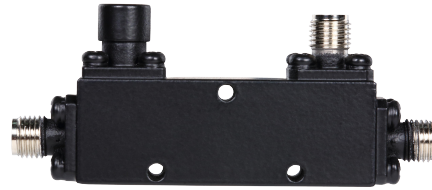


Features:

- It can realize the customized design scheme
- High directivity within operational band
- Low loss and High isolation

Typical Applications

- Mobile communication field
- GSM,LTE,5G
- Satellite radar, electronic countermeasures
- Test equipment


Electrical&Mechanical Specifications

Parameter		Min.	Typ.	Max.	Units
Frequency Range		2		40	GHz
Nominal Coupling		29	30	31.5	dB
Frequency Sensitivity			±0.7	±1.0	dB
Directivity		10	13		dB
Insertion Loss (Excl. Coupling)				1.5	dB
Insertion Loss (true)			1.1	1.6	dB
VSWR Primary			1.4	1.5	: 1
VSWR Secondary			1.4	1.5	: 1
Power Rating	Average	30			W
	Peak	500 (10%DutyCycle,1usPulseWidth)			W
Impedance		50			Ohms
Weight		NA			ounces
Input / Output Connectors		2.92mm – Female			
Material		Aluminum			
Finish		Oxidation sandblasting			

Environmental Specifications	
Operational Temperature	-40°C~+85°C
Storage Temperature	-50°C~+105°C
Altitude	30,000 ft. (Epoxy Sealed Controlled environment)
	60,000 ft. 1.0psi min (Hermetically Sealed Un-controlled environment)
Vibration	25gRMS (15 degrees 2KHz) endurance, 1 hour per axis
Humidity	100% RH at 35°C, 95%RH at 40°C
Shock	20G for 11msec half sine wave, 3 axis both directions

Outline Drawing:

All Dimensions in mm (inches)

Outline Tolerances ±0.5(0.02)

Mounting Holes Tolerances ±0.2(0.008)

