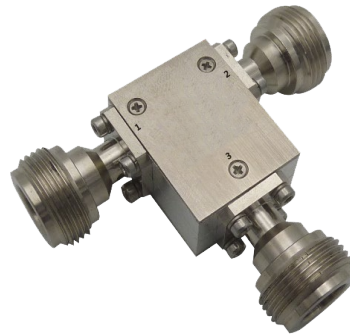


Features

- It can realize the customized design scheme
- Stable performance over temperature
- Low loss and High isolation

Typical Applications

- Mobile communication field
- GSM,LTE,5G
- Satellite radar, electronic countermeasures
- Test equipment



Electrical&Mechanical Specifications

Parameter		Min.	Typ.	Max.	Units
Frequency Range		2.7		3.5	GHz
Insertion Loss				0.3	dB
Isolation		20			dB
VSWR				1.2	: 1
Bandwidth		5% ~15%			
Rotation		Counter Clockwise			
Power Rating	Forward Power	30			W
Impedance		50			Ohms
Weight		NA			ounces
Input / Output Connectors		N – Female			
Material		Aluminum			
Finish		Nickel Plated			

Environmental Specifications

Operational Temperature	-20°C~+70°C
Storage Temperature	-40°C~+85°C
Altitude	30,000 ft. (Epoxy Sealed Controlled environment)
	60,000 ft. 1.0psi min (Hermetically Sealed Un-controlled environment) (Optional)
Vibration	25gRMS (15 degrees 2KHz) endurance, 1 hour per axis
Humidity	100% RH at 35°C, 95%RH at 40°C
Shock	20G for 11msec half sine wave,3 axis both directions

Outline Drawing:

All Dimensions in mm (inches)
 Outline Tolerances ±0.5(0.02)
 Mounting Holes Tolerances ±0.2(0.008)

